



PRESENTATION FOR:  
**8201 LANSDOWNE AVENUE  
UPPER DARBY  
SCHOOL DISTRICT**

**UPPER DARBY TOWNSHIP  
COMMUNITY MEETING**

# Community Improvements

## Eliminate Auto Repair Garage

- ❑ Service station & Vehicles Storage Removed
- ❑ Existing Building and Concrete Parking Area will be removed in their entirety.
- ❑ Landscaped Rain Garden with green space replaces all concrete.



**Replace Automobile Service Station and  
Parking Area with Green Landscape**

UPPER DARBY SD – DISTRICT OFFICE & OPERATIONS FACILITY

April 12, 2021 - Slide: 2



# Community Improvement

## Remove Sanitation Parking Facility and Buildings

- ❑ Sanitation Department Offices will be Demolished
- ❑ 124 Garbage Truck daily trips on and off Site will be eliminated .
- ❑ Eliminate Odors from Garbage Trucks on site.
- ❑ Only 12 Trucks will refuel at front of lot.

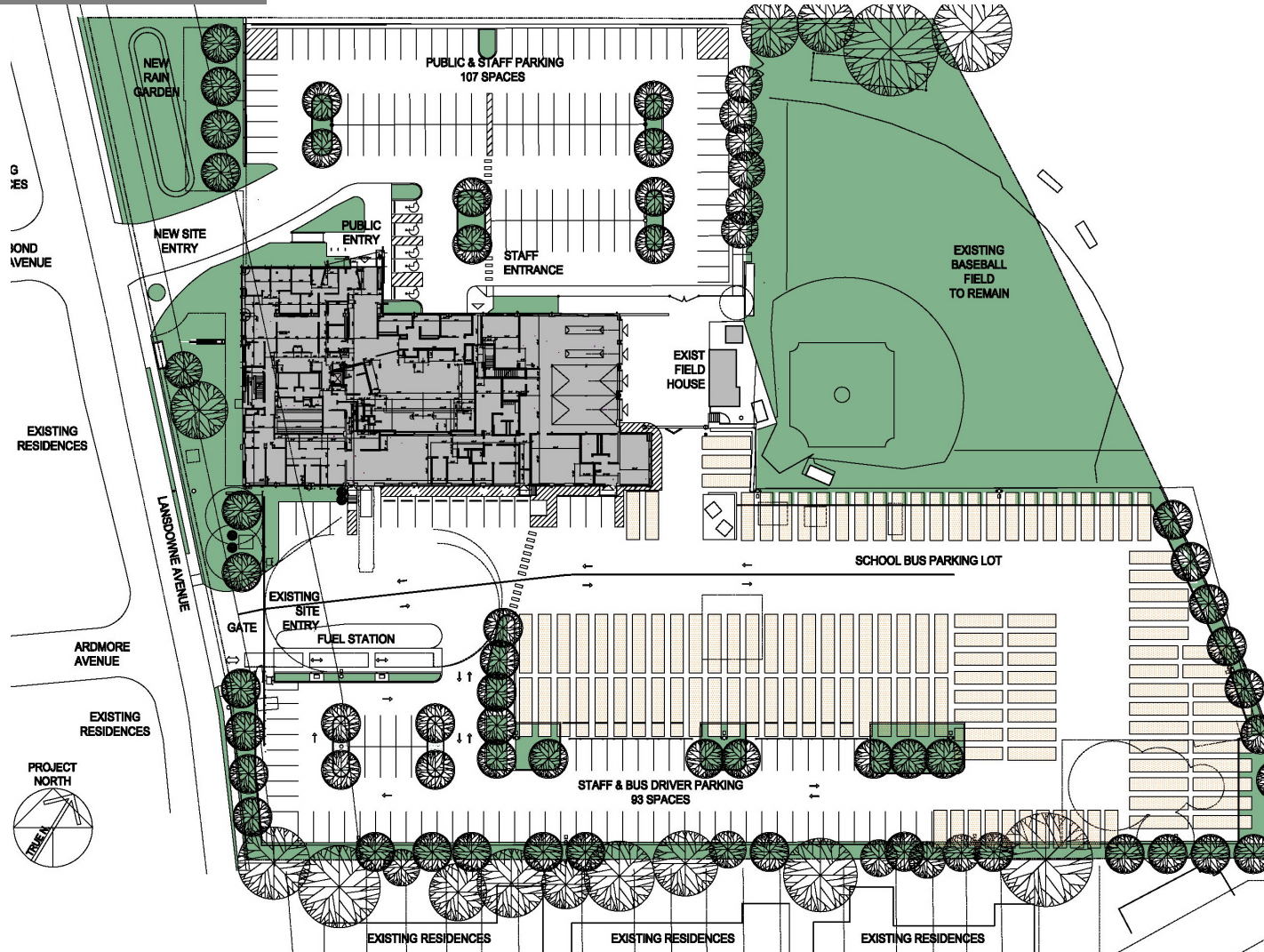


***Reduce Noise, Odors, Debris & Truck Traffic by moving Sanitation Off-site***



# Proposed Site Improvement

- ❑ North - Public Access
  - New Vehicle Access from Lansdowne Ave.
  - New Public Entry w/ safe Pedestrian Access
  - Parking for Visitors & Ballfield users
  - Pedestrian Access to Baseball Field from North Lot
  
- ❑ South - District Operations
  - Increased Bus Driver Parking.
  - Dumpster away from perimeter.
  - Pedestrian Circulation Zones
  - Landscape Islands & Visual screening for Buses / Parking.
  - Bus & Truck Landscape Buffers against Residential Properties
  - 24/7 Security Monitoring
  - Lot is Secured & Screened by fence with access for adjacent properties
  - Modernized Refueling Station to minimize onsite time
  - Site Lighting Control



- C-2 Commercial
- 5.6 acres
- 1.14 acres disturbed
- 205 proposed automobile parking spaces
- 129 buses
- 110 buses on daily runs



# Community Benefits

## Improvements to the Site

- ❑ New sidewalks with ADA accessibility
- ❑ Pedestrian Access to Ballfield from North Lot
- ❑ New Public Parking Area
- ❑ Reduction of traffic entering and leaving the property
- ❑ Landscape Islands
- ❑ **Provide 3'-0" Access path for St. Anthony Lane Neighbors**
- ❑ **Sustainable Design Elements:**
  - LED Lighting throughout Building and Site.
  - Building R-value increased to meet Energy Codes.
  - Bicycle Parking
  - Improved Stormwater Management



***Improve the Building Appearance and Condition***